

# Building to Change



# Community Organizing

**Where people affected by an issue are supported in identifying problems and empowered to take action to achieve solutions.**



# What Foundation will YOU build upon?

*Wise Woman builds upon rock!*



*Foolish Woman builds upon sand!*





# Grassroots Efforts

- **Solid Foundation- Stakeholders**

**Family /Friends**

**Community Base**

**Diversity/Balance**

**Impact on  
Family/Friends**  
**Best Resources**  
**Private vs. Public**  
**Understanding the  
Cost**

**Who will support you  
or the cause?**  
**Natural Supports**  
**Casual Supports**  
**Non-Supports**

**Cross sector of the community**  
**Inclusion Process**  
**Who's Missing?**  
**Inviting everyone to the table**



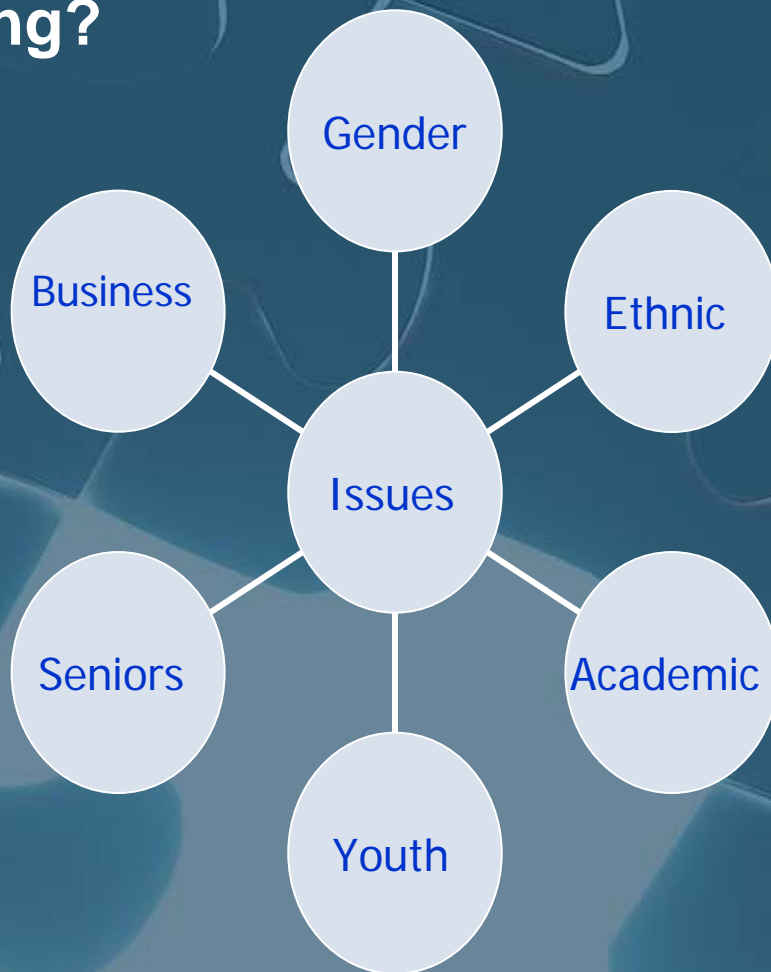
# Diversity Wheel

**Who's Missing?**

**Stakeholders**

**Your Base**

**Buy-in**





# Building a Movement

## Four Walls-

Abortion Rights  
Civil Rights  
Feminism  
Immigration  
Health Care  
Global Warming

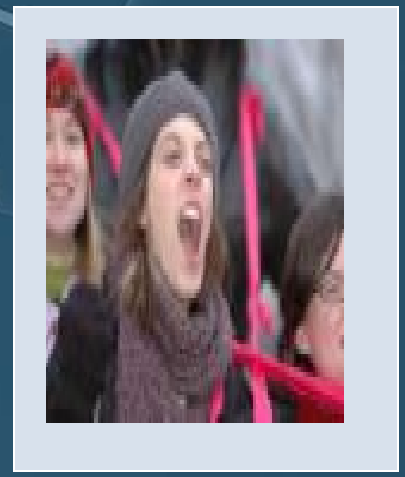
Issues/Challenges/  
Empowerment



Research



Action Plan  
Tactics/Activities



Implementation



# Building Blocks to Change

- **The Roof**

**Equity**

**Justice**

**Freedom**

**Healthcare for all**

**General Assembly 85% Women**

## Changing the Balance of Power

**Solid House + Movement = Change**

**The Roof**

**Changing the Balance of Power**

**The Walls**



**Issue**



**Research**



**Action**



**Implementation**

**Family \* Friends \* Community \* Diversity/Balance**

**The Foundation**



# Questions ?

**Presented by:**

**Rhonda Ridley**

**Sarah Noble**